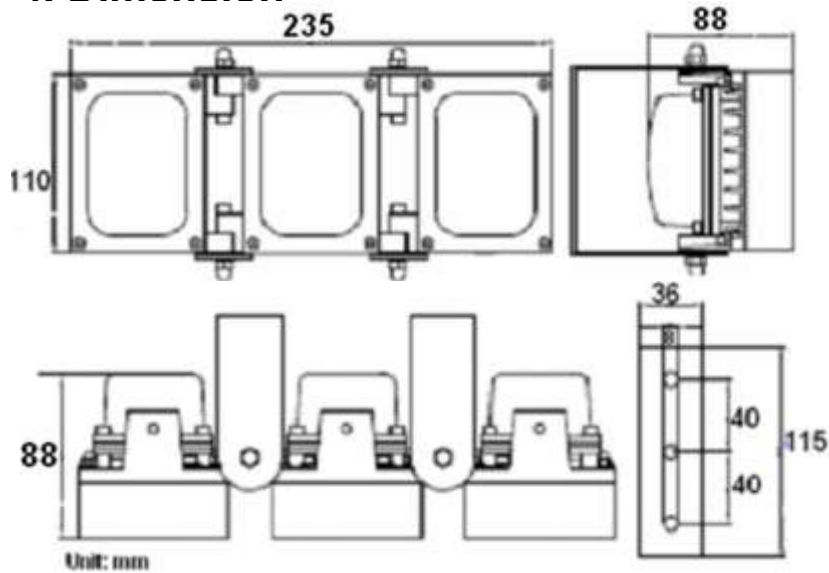


4. Dimension



5. Models for selection

Model	Beam Angle	Viewing distance (850nm)
S-H063-15-A-IR	15° - 45°	160m-100m
S-H063-30-A-IR	30° - 90°	120m-70m
S-H063-45-A-IR	45° - 150°	80m-50m
S-H063-60-A-IR	60° - 180°	40m-27m
S-H063-90-A-IR	90° - 200°	32m-20m
S-H063-120-A-IR	120° - 230°	24m-15m

Viewing distance is tested by SONY 1/3" CCD Camera. To achieve the distance needed, please pay attention to your camera specifications and lens before purchase. It is normal phenomenon distance may vary due to different cameras and lens.



Our product is weatherproof and dustproof. Do not modify the shape, dismantle or reconfigure the product, any inflow of water cause by which are not be responsible for warranty repair.

Instruction of IR Illuminator

S-H063-IR




Please strictly follow the below instructions when install this product!

1. Description

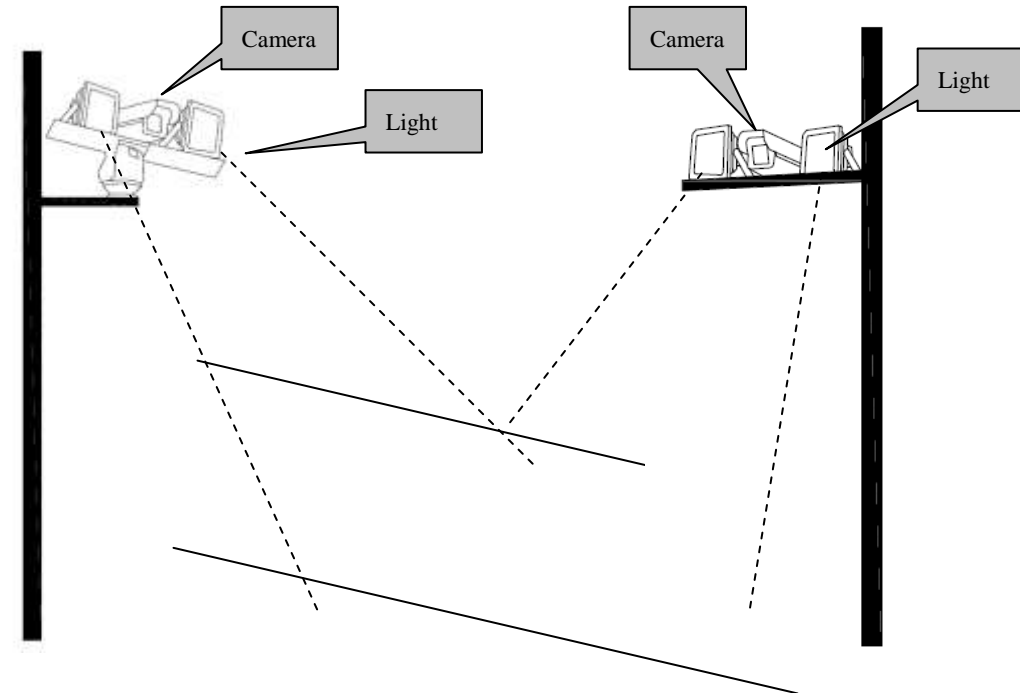
- Accurate constant circuit drive develops excellent performance of LED;
Using high power LED, high efficacy and long service life;
- Improve performance of camera to get better pictures at night time.
- Fill Light for night vision camera
- Indoor/Outdoor use
- Easy installation

2. Specification

Quantity of LED	18PCS 2W High Power LED
Wavelength	740nm/850nm/940nm
Power Factor	0.9-0.98
Beam Angle	15°- 230°
Viewing Distance	160m-15m
Day/night Switch	Auto
Working Voltage	AC85-265V/DC12V/AC24V
Power consumption	36W
Plug	AC110-220V  (standard), other voltage optional
Panel	Tempered glass panel
Housing	Aluminum Die Casting Housing
Bracket	Mount bracket
Working temperature	-40°C TO +55°C
Protection Level	IP66
Color	Black
N.W	3.0KG
G.W	3.9KG
Dimension	110*235*88mm

3. Installation

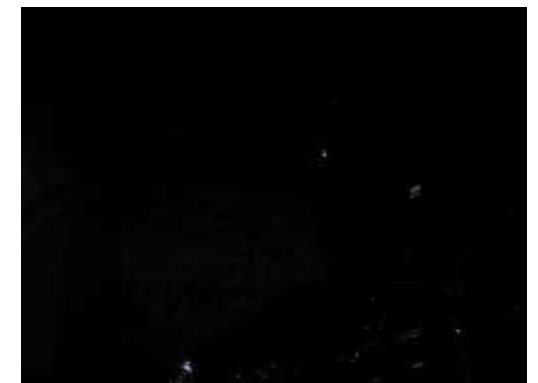
1. Installation Graph



2. Real Photos



Night time with IR Illuminator



Night time without IR Illuminator